

Plug Connection®

[plug + play]

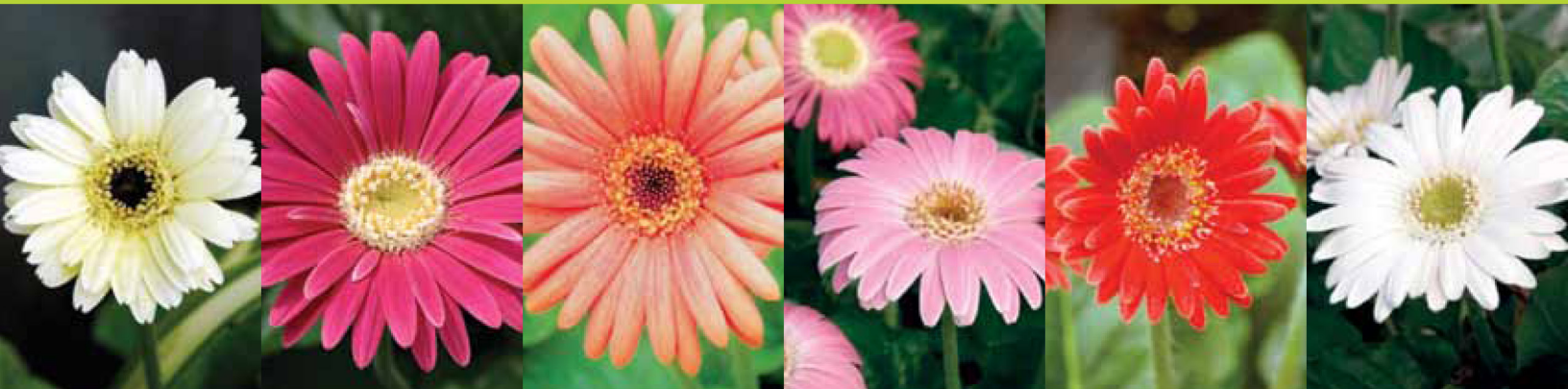
One Dignified Daisy

Elegantly tough, these disease-resistant garden Gerbera produce a profusion of medium-sized flowers on sturdy stems, from spring to late autumn.

[drakensberg™
daisy hardy garden
gerbera]



Drakensberg™ Daisy hardy garden gerbera



From left: DRAKENSBERG Buttermilk, Carmine, Orange, Pink, Scarlet, and White

Bred from a tough, wild species of Gerbera from the snowy peaks of the Drakensberg mountains in South Africa, this excellent series of incredibly disease-resistant, highperformance landscape Gerberas produce a profusion of medium-sized flowers on elegant, but sturdy, stems. Hardy and vigorous, they will flower spring, summer and fall through intense heat and high humidity – and bloom right up through the first frosts, thriving from Dallas to Detroit and beyond. Hardy Zones 7-11 with protection.

DRAKENSBERG APRICOT ^{PPAF} *Not Pictured*
Soft apricot flowers with dark centers.

DRAKENSBERG BUTTERMILK ^{PPAF}
Soft creamy-yellow flowers with dark centers.

DRAKENSBERG CARMINE
Intense carmine-pink flowers with lighter centers.

DRAKENSBERG ORANGE
Soft buff-orange flowers with darker centers.

DRAKENSBERG PINK
Delicate baby-pink flowers with lighter centers.

DRAKENSBERG SCARLET ^{PPAF}
Multitudes of fiery scarlet-red flowers.

DRAKENSBERG WHITE
Beautiful pure-white flowers with ivory centers.

POT SIZE / CROP TIMES:

4"/1 quart 6-8 weeks
6"/1 gallon 9-12 weeks

SALE OF FINISHED PRODUCT: April-December

POT SIZES: One liner per 4", quart or gallon pot. Two to three liners per 8-12" pot.

PLANTING: Pot February to June, depending on desired pot size and finishing date. Rosette habit, so no pinch required.

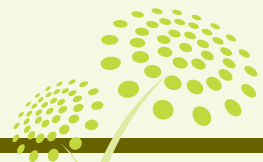
FERTILITY: Best when provided with 150-200 ppm constant liquid feed of a complete fertilizer such as 15-5-15 or 20-10-20. Leach periodically with clear water to keep soil EC between 1.2-1.8.

SOIL MIX: Well-drained peatlite mix, neutral pH, good water and nutrient retention.

TEMPERATURE: Start early crops in greenhouse. A brief cool treatment will bring on a very strong flower flush. Outdoor cultivation in full sun recommended once danger of frost has passed.

LIGHT: Best when grown under full sun conditions. Flower initiation continuous under good light conditions, but especially profuse after some cool treatment.

PGR: Naturally compact, hence do not require PGR treatments. Flower stems about 8-10" long.



Plug Connection®

[plug + play]

For details, please call (760) 631-0992
or email info@plugconnection.com