

Kia Ora Flora captures the brilliant spirit of New Zealand and shares it with the world – after all, “kia ora” itself is a popular greeting that wishes good health and fortune in New Zealand’s native language.



KIA ORA FLORA[®]

One look at their shiny smooth evergreen foliage and you'll know why New Zealanders call them Mirror Plants. In fact, many varieties resemble a multicolored boxwood plant. Among the most textural and versatile plants around, there's a Coprosma habit and color for every taste – and every part of the garden or landscape. Coprosma foliage colors also darken and intensify in cool weather. Easy, fast-growing and deer-resistant, these rugged beauties do best in fertile, well-drained soil. Outstanding plants for the tropical garden and among the easiest for bonsai and container use.

The uniform, consistent habit of the Cocktail Series make these three varieties the perfect choice for 4' to 6' pot production. Excellent in mixed containers or as specimens, they command a premium at retail with their unusual color and texture with a tidy habit. Cool night temperatures enhance foliage colors.



COPROSMA repens
'Martini Midnight' PPAF

Season: 12"h x 12"w
Mature: 3.5'h x 3.5'w
Zones 8-11, Full Sun to Part Shade

This all-black version of our most popular variety, Tequila Sunrise, is sure to be a hot seller. Its dark foliage becomes almost black under cool temperatures, and when paired with Tequila Sunrise and its sister variety Piña Colada, the three of these, together, are sure to be even more popular. Excellent in 4" and 1 gallon pots.



COPROSMA repens
'Piña Colada' PPAF

Season: 12"h x 12"w
Mature: 3.5'h x 3.5'w
Zones 8-11, Full Sun to Part Shade

An excellent new sister variety to the bestselling Coprosma, Tequila Sunrise, this golden-leaved plant becomes suffused with orange when nights are cool. Excellent in mixed containers, 4" and gallons.



COPROSMA repens
'Tequila Sunrise' PP18392

Season: 12"h x 15"w
Mature: 3.5'h x 3.5'w
Zones 8-11, Full Sun to Part Shade

This plant is our #1 seller. Stunning foliage changes from lime-green and yellow in the spring to sunset-orange and burgundy as the weather cools. Excellent in 4", quarts and gallons.



COPROSMA repens
'Plum Hussy'

Season: 12"h x 12"w
Mature: 3.5'h x 3.5'w
Zones 8-11, Full Sun to Part Shade

Plum-purple, rounded leaves make this exciting new variety a great specimen plant as well as superb in mixed containers and landscapes. A more open and elegant habit, the deeper tones of color are more prominent in the cool weather of winter.

TRAY SIZE: 72/72
MINIMUM: 1 tray/variety (3-tray minimum if boxed for shipping)
CROP TIME: 14-30 weeks depending on variety
PINCH: Minimum 1



COPROSMA repens
'Aurea'

Season: 15-18"h x 15-18"w
Mature: 3-4'h x 4-5'w
Zones 8-11, Full Sun to Part Shade

With bright golden variegation, this strong grower adds a splash of light wherever it's grown. Excellent in a 4" pot or gallon, it's great as a landscape plant in mild climates or in containers in cold climates.



COPROSMA repens
'Middlemore'

Season: 18"h x 12"w
Mature: 4'h x 3'w
Zones 8-11, Full Sun to Part Shade

A very hardy, versatile plant with small, vibrant, glossy, emerald green leaves and a very compact habit. An excellent replacement for boxwood in warmer weather areas. Great in containers, excellent as a hedge.



COPROSMA repens
'Evening Glow'

Season: 12"h x 12"w
Mature: 3-4'h x 3-4'w
Zones 8-11, Full Sun to Part Shade

Striking, variegated foliage with small, ovate leaves which are green with irregular, yellow blotches that turn bright orange-red in late summer and hold their color until the following spring when new growth begins. Excellent in 4", gallon or mixed containers.



COPROSMA repens
'Pink Splendor'

Season: 18"h x 18"w
Mature: 3-4'h x 3-4'w
Zones 8-11, Full Sun to Part Shade

Very glossy leaves in shades of green, yellow and pink with the best color in winter months. Excellent in 4", quarts and gallons.



COPROSMA repens
'Golden Glow' PPAF

Season: 12"h x 12"w
Mature: 1.5'h x 1.5'w
Zones 8-11, Full Sun to Part Shade

Colorful, glossy-leaved plant turning more peachy in winter. Fabulous accent plant or showy hedge.



COPROSMA repens
'Taupata Gold'

Season: 12"h x 12"w
Mature: 4'h x 5'w
Zones 8-11, Full Sun to Part Shade

One of the most popular varieties for use in mixed containers. The vibrant, variegated, wide leaves brighten any area, in the landscape or in a container.



COPROSMA repens
'Lemon Lime' PPAF

Season: 12-15"h x 12-15"w
Mature: 3'h x 3'w
Zones 8-11, Full Sun to Part Shade

An exciting new selection of this compact grower. Its brightly variegated leaves with a great, glossy sheen are perfect in small pots or small landscapes in a mass planting. Great in mixed containers and a good grower, this plant is sure to please. Fall color is suffused with pink as cool nights set in. Excellent in 4", quarts and gallons.



COPROSMA repens
'Yvonne'

Season: 12"h x 18"w
Mature: 5'h x 5'w
Zones 8-11, Full Sun to Part Shade

Evergreen, erect shrub with glossy, oval, dark chocolate brown leaves. Leaf color darkens to almost black in winter. Popular garden specimen or screen plant. Excellent in 4", quarts and gallons.



HEBE

Nothing to worry about with our group of evergreen Veronica. Hebe are exceptionally easy to grow. The plants have a bushy, upright habit and attractive, narrow, spear-shaped green leaves. It's the blooms, however, that are the big story. The dense sprays of flower clusters in various shades of lilac are gorgeous. Blooms under short days of spring and fall. Very butterfly friendly. Plant in well-drained soil.



HEBE hybrid
'Raspberry Ripple' PPAF

Season: 10"h x 15"w
Mature: 2.5'h x 2.5'w
Flower Color: Lilac/White Bicolor
Bloom Season: May/June
Zones 9-11, Full Sun to Part Shade

An excellent, compact, green-leafed Hebe that gets covered in pink blooms in late spring. Trim it back for a repeat performance in late summer/fall. Great in 4", quarts and gallons.



HEBE hybrid
'Strawberries and Cream' PPAF

Season: 10"h x 15"w
Mature: 2.5'h x 2.5'w
Flower Color: Pink
Bloom Season: May/June
Zones 9-11, Full Sun to Part Shade

An excellent, compact, green-leafed Hebe that gets covered in pink blooms in late spring. Trim it back for a repeat performance in late summer/fall. Great in 4", quarts and gallons.



HEBE speciosa x diosmofolia
'Inspiration'

Season: 10"h x 15"w
Mature: 2.5'h x 2.5'w
Flower Color: Purple
Bloom Season: Spring/Summer
Zones 9-11, Full Sun to Part Shade

A neat, compact hybrid shrub, the flower is a deep purple which fades to white with age, giving a two-tone effect. Great in 4", quarts and gallons.

CORDYLINE

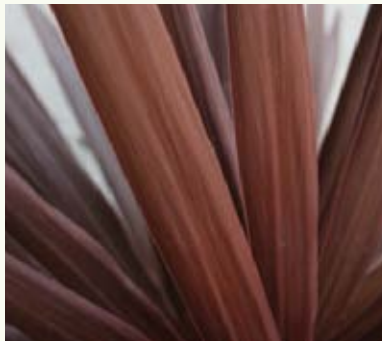
We adapt our offerings to best take advantage of the best-performing varieties available from our most reliable labs. We offer both proven varieties as well as the more unusual and harder-to-find selections. Our Cordyline program is designed to provide a well-grown plant that will grow quickly and appeal to both retailers and consumers.



CORDYLINE australis
'Red Sensation'

Height: 15-25'
Width: 8-10'
Habit: Clumping

This showy plant has long, purplish-red, arching, broad leaves.



CORDYLINE australis
'Red Star'

Height: 15-20'
Width: 8-10'
Habit: Stem

This showy and vigorous plant has very dark reddish-bronze, sword-like leaves. Upright habit and with age will branch to produce several heads.



CORDYLINE australis
'Torbay Dazzler'

Height: 6.5'
Width: 5'
Habit: Stem

Each leaf has variable stripes of yellow, creams and greens, with a pale-pink hue along the mid rib and towards the stem base.

TRAY SIZE: 72/72
MINIMUM: 1 tray/variety (3-tray minimum if boxed for shipping)
CROP TIME: 14-30 weeks depending on variety
PINCH: Minimum 1

