



Explode your garden palette.

Four new Erysimum series have been created to give you better plants with more colors and longer flowering. These hybrid varieties bloom nonstop for months. Start them warm to bulk and then keep them cool through winter for an explosion of color – and cash – in early spring.

[**erysimum**]
hybrid culture



Erysimum hybrid culture



From left: *Erysimum Orange GLOW™*, *POEM Pastel*, *POEM Lavender*, *RYSI Gold*, *RYSI Moon*, *WINTER Rouge*

These four new Erysimum series have been created by crossing many different species with the goal of having more colors, better plants and longer flowering. The value of these hybrid varieties is that they can be grown very much like a fall Pansy or Regal Geranium and will bloom nonstop for months. Start them warm and then grow cold to initiate flowers for a profitable, early-spring sale.

Once plants have achieved 50% of optimal size, they should be vernalized and finished cool. Fertility and soil moisture should be maintained throughout the entire crop cycle to avoid lower-leaf yellowing. Cool but frost-free temperatures during vernalization and towards the end of the production cycle will improve crop quality and bloom count substantially. Do not pinch or trim plants after cool treatment, since this will remove the terminal flower bud sets. Plants can be held under cool conditions for longer periods if market/weather conditions necessitate delays in shipping.

CROP TIMES BY SERIES:

GLOW SERIES

4"	5-6 weeks warm plus 4-6 weeks cool
6"	6-8 weeks warm plus 4-6 weeks cool
1 gallon	8-11 weeks warm plus 4-6 weeks cool

POEM SERIES

4"	5-6 weeks warm plus 4-6 weeks cool
6"	6-7 weeks warm plus 4-6 weeks cool
1 gallon	8-10 weeks warm plus 4-6 weeks cool

RYSI AND WINTER SERIES

5 - 6"	6-7 weeks warm plus 4-6 weeks cool
1 gallon	8-10 weeks warm plus 4-6 weeks cool
2 gallon	12-15 weeks warm plus 4-6 weeks cool

GROWING CONDITIONS: Warm (65°F+) / Cool (35°-46°F)

FERTILIZER, PESTS AND DISEASE: Watch plants for cabbage moths and whitefly. Overhead watering can promote bacterial and fungal diseases. Maintain even moisture levels and fertilize plants throughout production cycle – even during the cold period – at 200-300 ppm N with a pH of 5.7-6.2. Low fertility rates can cause lower-leaf yellowing and drop.

POT SIZES: One liner per quart or gallon pot.

SOIL MIX: Well-drained peatlite mix, neutral pH, good water and nutrient retention.

LIGHT LEVELS: High light levels recommended, no shade. Long-day treatment NOT recommended.

PGR: Recommended during bulking: spray treatment with 5ppm Sumagic as needed. Refrain from further PGR treatments once terminal buds are well-developed to prevent compressed flower spikes.

The smallest and hardiest of the varieties are the GLOW varieties – followed by the medium-sized POEM varieties, which are more frost-tender than others, but also require less vernalization to flower. The RYSI and WINTER series are the largest plants, with the biggest flowers, and are best suited for 1-2 gallon pots.

For larger finished sizes, pot early (late summer/early autumn) so plants have an opportunity to bulk before cooler temperatures set in.

California growers have found that growing the crop outside, under naturally cool coastal conditions, results in high-quality plants with a shorter (but overall cooler) crop time.

Erysimum GLOW™

Small, honey-scented flowers in a range of citrus colors cover the plant for 8-12 weeks in early spring. Very hardy, with reliable, frost-proof color for early season. Best in 4-6" pots. Zones 5-11.

CORAL GLOW^{PPAF*}

Apricot-colored, strongly fragrant flowers.

GOLDEN GLOW^{PPAF*}

Bright golden-yellow, honey-scented flowers.

ORANGE GLOW

Solid navel-orange flowers, strong fragrance.

Erysimum WINTER

Large, sweetly scented flowers in a range of luscious colors. An excellent choice for a high-value companion crop to spring Pansies. Best suited to 6", 1 and 2 gallon pots. Pairs well with RYSI Series. Zones 8-11.

WINTER JOY*

Intense lilac-purple flower spikes.

WINTER ORCHID^{PPAF*}

Flowers open red, fade to deep orchid-purple.

WINTER ROUGE^{PPAF}

Flowers open blood-red and fade to russet.

WINTER SORBET IMPROVED*

Flowers open rust-orange, then turn to lilac-purple.

WINTER SUN^{PPAF*}

Flowers open canary-yellow and fade to buttercream.

Erysimum POEM

Bushy in habit, with a lower chill requirement, this series provides masses of reliable color early in the season.

Best in 5" to 1 gallon pots. Zones 8-11.

POEM LILAC*

Intense lilac-purple flower spikes.

POEM LAVENDER

Soft lavender flower spikes.

POEM PASTEL^{PPAF}

Flowers open pale primrose-yellow and darken to soft lavender.

POEM MIRABELLE^{PPAF*}

Flowers open bright golden-orange, darkening to rosy peach tones.

Erysimum RYSI

Large, fragrant flowers in a range of rich colors. An excellent choice for a high-value companion crop to spring Pansies.

Best suited to 6", 1 and 2 gallon pots. Excellent companion to Winter Series. Zones 8-11.

RYSI BRONZE*

Golden flowers flushed with bronze tones.

RYSI COPPER^{PPAF*}

Flowers open tangerine-copper and pale to golden-orange.

RYSI GOLD

Solid chrome-yellow flowers.

RYSI MOON^{IPPAF}

Flowers open cream and fade to milky white.

RYSI STAR^{PPAF*}

Flowers open bright acid-yellow and fade to primrose.



Plug Connection®

[plug + play]

*Pictured on back

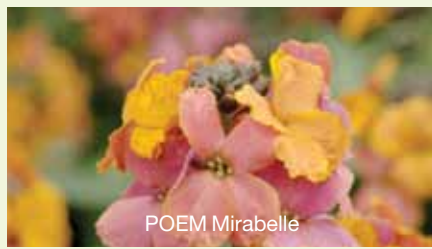
Erysimum hybrid culture



Golden GLOW



Coral GLOW



POEM Mirabelle



WINTER Joy



WINTER Orchid



POEM Lilac



WINTER Sorbet Improved



RYSI Copper



RYSI Star



RYSI Bronze



WINTER Sun