

# Fall 2009 [ Cordyline ] Variety List



## **Cordyline australis Midnight**

Height: 10-13 ft.

Width: 6.5 ft.

Hardiness: 10-20 F (Zone 8)

Habit: Single stem

Description: Spiky deep red foliage that is almost black.



## **Cordyline australis New Red**

Height: 2-3 ft.

Width: 2-3 ft.

Hardiness: 15-20 F (Zone 8)

Habit: Clumping

Description: Upright with beautiful arching glossy red-purple leaves.



## **Cordyline australis Pink Champagne**

Height: 2-6 ft.

Width: 3-4 ft.

Hardiness: 10-15 F (Zone 8)

Habit: Single stem

Description: Bright-white variegation with pink coloring in the basal stem, and narrow, stiff upright leaves.



## **Cordyline australis Red Sensation**

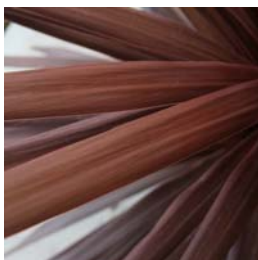
Height: 15-25 ft.

Width: 8-10 ft.

Hardiness: 0-10 F (Zone 7)

Habit: Clumping

Description: This showy plant has long purplish-red arching, broad leaves.



## **Cordyline australis Red Star**

Height: 15-20 ft.

Width: 8-10 ft.

Hardiness: 15 F (Zone 8)

Habit: Single stem

Description: This showy and vigorous plant has very dark reddish bronze sword-like leaves. Upright habit and with age will branch to produce several heads.

### **PROGRAM SPECIFICS:**

Tray Size: 72 count

Minimum: 1 tray/variety (2 tray minimum if boxed for shipping)

Crop Time: 18 weeks

Discount: not available

Propagation: tissue culture

Cost: ask your favorite broker

All items subject to availability of microcuttings

As of: 03/25/2009



# Fall 2009 [ Cordyline ] Variety List



## **Cordyline australis Renegade (PP18,605)**

Height: 2-3 ft.

Width: 2-3 ft.

Hardiness: 20-30 F (Zone 9)

Habit: Clumping

Description: A new hybrid introduced by Planthaven. It has 2-inch glossy black leaves.



## **Cordyline australis Sundance**

Height: 6.5 ft.

Width: 5 ft.

Hardiness: 10-15 F (Zone 8)

Habit: Single Stem

Description: Upright habit with deep green sword-like strap leaves with a bright red-orange coloring at the base of the leaf petioles.



## **Cordyline australis Torbay Dazzler**

Height: 6.5 ft.

Width: 5 ft.

Hardiness: 10-15 F (Zone 8)

Habit: Single Stem

Description: Each leaf has variable stripes of yellows, creams and greens, with a pale pink hue along the mid rib and towards the stem base.

## **Cordyline fruticosa Caruba Black**

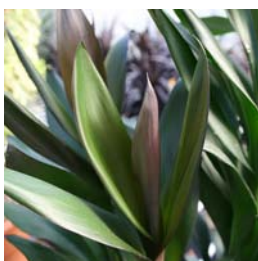
Height: 4 ft.

Width: 1.5 ft.

Hardiness: 30-40 F (Zone 10)

Habit: Clumping

Description: Shiny dark purple-black leaves with compact, bushy growth and multiple stems.



## **Cordyline stricta Soledad Purple**

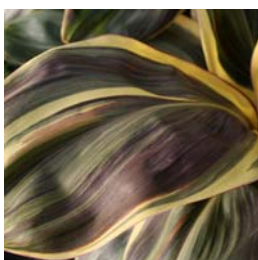
Height: 10 ft.

Width: 3 ft.

Hardiness: 20-30 F (Zone 9)

Habit: Clumping

Description: This plant works well in interiors or shaded exteriors. Shiny green foliage with purple undersides.



## **Cordyline terminalis Chocolate Queen**

Height: 1.5 ft.

Width: 1.5 ft.

Hardiness: 30-40 F (Zone 10)

Habit: Clumping

Description: Variegated with cream and whites and as the plant ages it flushes with a beautiful purple to deep red color. Leaves can reach 3 inches wide.

### **PROGRAM SPECIFICS:**

Tray Size: 72 count

Minimum: 1 tray/variety (2 tray minimum if boxed for shipping)

Crop Time: 18 weeks

Discount: not available

Propagation: tissue culture

Cost: ask your favorite broker

All items subject to availability of microcuttings

As of: 03/25/2009

